



WSSC Changes and How it Effects Your Bill

New 2019 Account Numbers, Rate Structures
and Changes in Your Monthly Water Bills



WSSC Changes as of July 1, 2019



The first thing you will notice is that all 7 Digit account numbers have been changed to 10 Digit account numbers.

All bills issued after July 1, 2019 will have the new account number. There seems to be no pattern as to how the new account numbers were assigned.

For instance Account # 1245678 will now be # 0187540000

WSSC Changes as of July 1, 2019



- We all know that WSSC determines its water and sewer rates according to a property's ADC (average daily consumption per unit per day). This will remain the same. However the rate categories are changing.
- As in prior years, in addition to water and sewer consumption based charges, commercial and multi-family clients also have an additional consumption based "Bay Restoration Fee" that is charged at a rate of \$0.65 per kgal.

WSSC Changes as of July 1, 2019

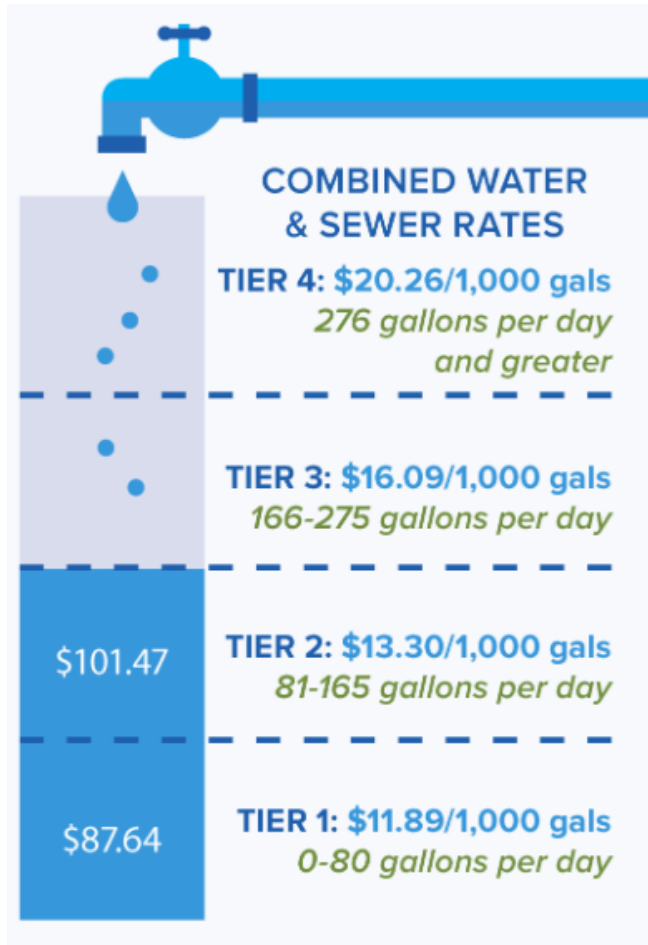


The Rate Tiers have changed from the 16-tier rate structure (on the right) to a 4-tier rate structure (below).

4 TIER Rate Structure: EFFECTIVE JULY 1, 2019				
ADC Gals/unit/day	Water Rate Per 1,000 Gallons	Sewer Rate Per 1,000 Gallons	BRF Rate	Total Rate
0 - 80	\$5.09	\$6.80	\$0.65	\$12.54
81 - 165	\$5.74	\$7.56	\$0.65	\$13.95
166 - 275	\$6.62	\$9.47	\$0.65	\$16.74
> 275	\$7.76	\$12.50	\$0.65	\$20.91

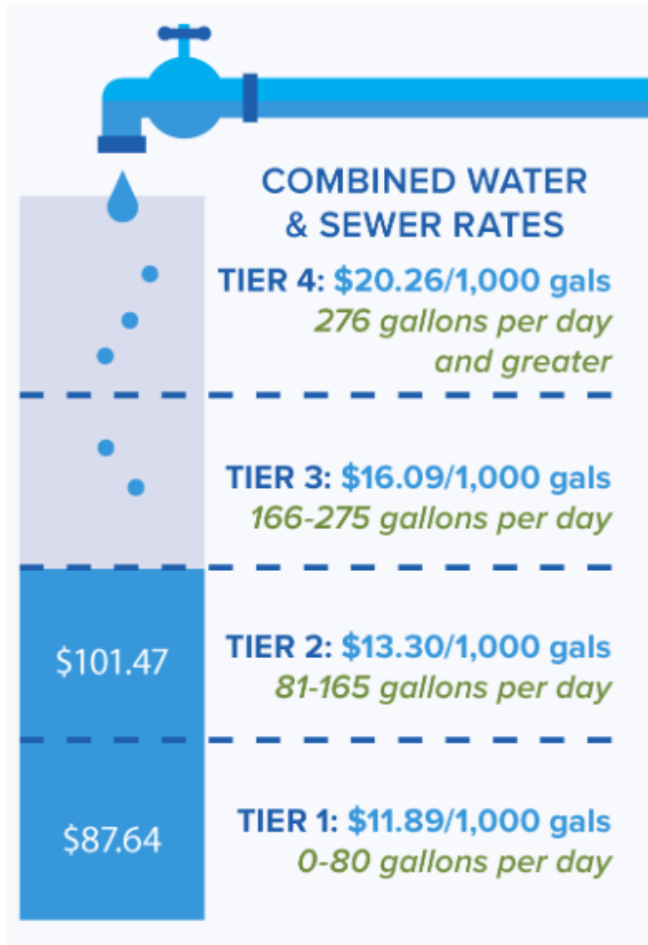
16 Tier Rate Structure PRIOR TO JULY 1, 2019				
ADC Gals/unit/day	Water Rate Per 1,000 Gallons	Sewer Rate Per 1,000 Gallons	BRF Rate	Total Rate
0-49	\$3.61	\$4.70	\$0.65	\$8.96
50 - 99	\$4.04	\$5.49	\$0.65	\$10.18
100 - 149	\$4.47	\$6.38	\$0.65	\$11.50
150 - 199	\$4.98	\$7.37	\$0.65	\$13.00
200 - 249	\$5.83	\$8.03	\$0.65	\$14.51
250 - 299	\$6.32	\$8.70	\$0.65	\$15.67
300 - 349	\$6.70	\$9.27	\$0.65	\$16.62
350 - 399	\$6.97	\$9.73	\$0.65	\$17.35
400 - 449	\$7.24	\$9.95	\$0.65	\$17.84
450 - 499	\$7.46	\$10.25	\$0.65	\$18.36
500 - 749	\$7.59	\$10.47	\$0.65	\$18.71
750 - 999	\$7.77	\$10.71	\$0.65	\$19.13
1,000 - 3,999	\$7.91	\$11.16	\$0.65	\$19.72
4,000 - 6,999	\$8.10	\$11.41	\$0.65	\$20.16
7,000 - 8,999	\$8.20	\$11.58	\$0.65	\$20.43
9,000 - Greater	\$8.34	\$11.89	\$0.65	\$20.88

WSSC Changes as of July 1, 2019



- The first major change is that the 3 lowest rate tiers have now been eliminated. This means that properties that are currently using less than 200 gallons per unit per day will see an increase in costs.
- Going forward Tier 1 charges will apply to the first 80 gallons used per day. Tier 2 charges will apply to the next 85 gallons used per day and Tier 3 charges will apply to the next 100 gallons used per day. Because of this properties that are currently using more than 200 gallons per unit per day will see a decrease in costs.
- Tier 4 charges will apply only to the water use of 276 gallons per unit per day or greater.

WSSC Changes as of July 1, 2019



- It was determined by the Maryland Public Service Commission that the old rate structure was unfair to customers that use greater than average amounts of water.
- The new 4-tier rate structure replaces the 16-tier rate structure which had been in place for over 25 years.
- The new rate structure per WSSC is commonly used across the country and ensures that rates are fair and equitable for all WSSC customers.

WSSC Changes as of July 1, 2019



Unfortunately the New Rates Increase Costs for ADC's below 200.

The below examples show the increase in consumption costs for a 100 unit property with varying ADC's below 200 gallons per unit per day.

Billing days	Units	ADC	Pre July 1, 2019 consumption Costs	Post July 1, 2019 consumption Costs	Percent change
30	100	46	\$1,236.48	\$1,730.52	40%
30	100	80	\$2,443.20	\$3,009.60	23%
30	100	110	\$3,795.00	\$4,265.10	12%
30	100	149	\$5,140.50	\$5,897.25	15%
30	100	199	\$7,761.00	\$8,274.33	7%
30	100	200	\$8,706.00	\$8,324.55	-4%

WSSC Changes as of July 1, 2019



New Rates Decrease Costs for ADC's above 200.

The examples below show a decrease in consumption costs for a 100 unit property with varying ADC's above 200 gallons per unit per day.

Billing days	Units	ADC	Pre July 1, 2019 consumption Costs	Post July 1, 2019 consumption Costs	Percent change
30	100	175	\$6,825.00	\$7,069.05	+4%
30	100	200	\$8,706.00	\$8,324.55	-4%
30	100	235	\$10,229.55	\$10,082.25	-1%
30	100	275	\$12,927.75	\$12,091.05	-6%
30	100	300	\$14,958.00	\$13,659.30	-9%
30	100	360	\$18,738.00	\$17,423.10	-7%



What does this mean to you?

- Consumption based charges are still responsible for approximately 97% of your total charges.
- Reducing usage is the only way to combat these changes especially if you already have a low ADC.
- Reducing usage by just 25 gallons per unit per day will reduce annual costs by more than \$125 per unit per year.
- For additional details go to: <https://www.wsscwater.com/billchanges>